

YG-DCO-015-B

# Yorkshire Green Energy Enablement (GREEN) Project

Volume 2

Document 2.8.3 Statutory or Non-Statutory Sites or Features  
of Nature Conservation Plan Section C

Final Issue A

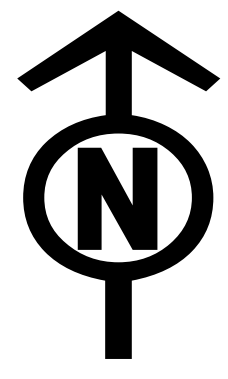
November 2022

Planning Inspectorate Reference: EN020024

Infrastructure Planning (Applications: Prescribed Forms and  
Procedure) Regulations 2009 Regulation 5(2)(l)(i)

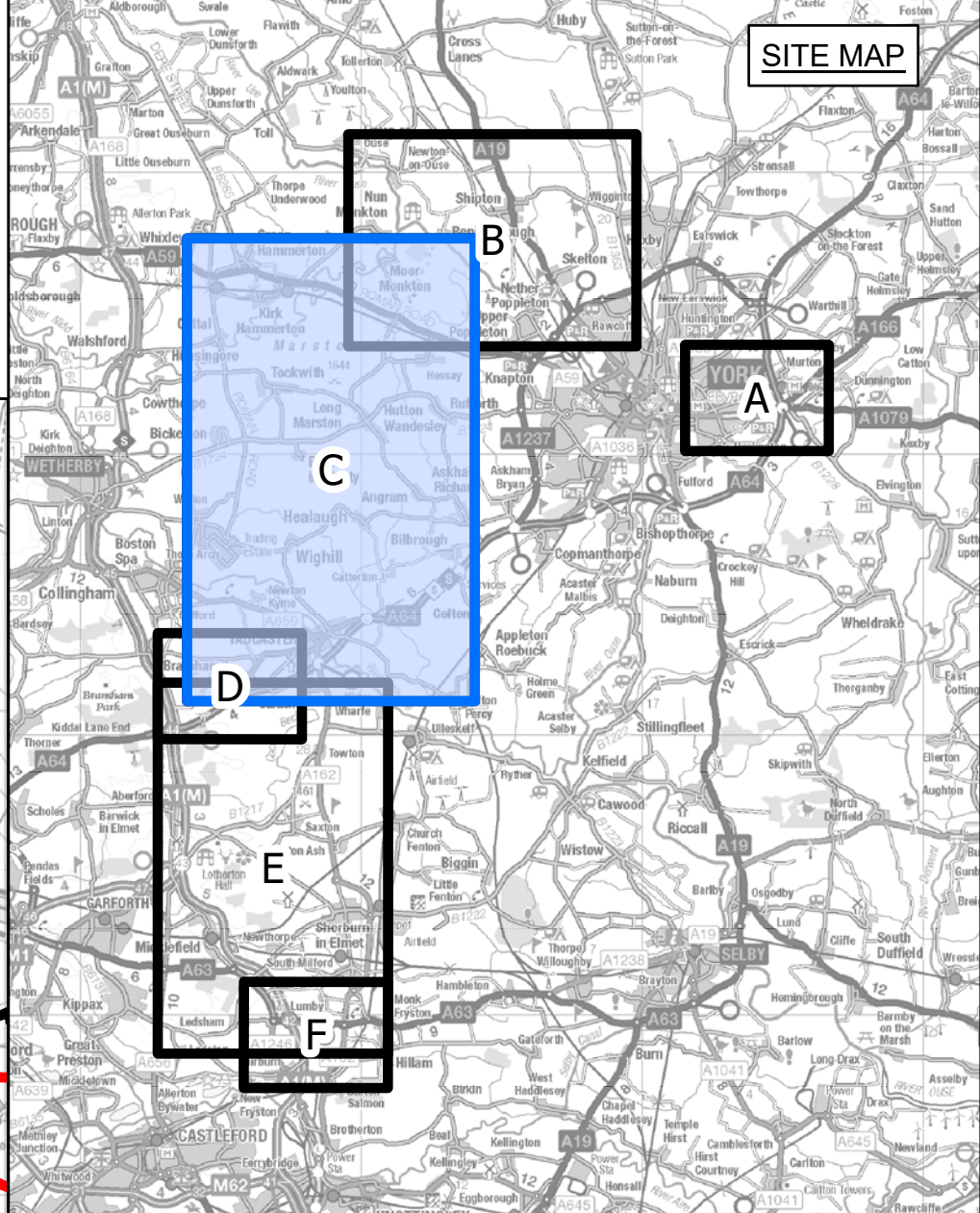
**nationalgrid**



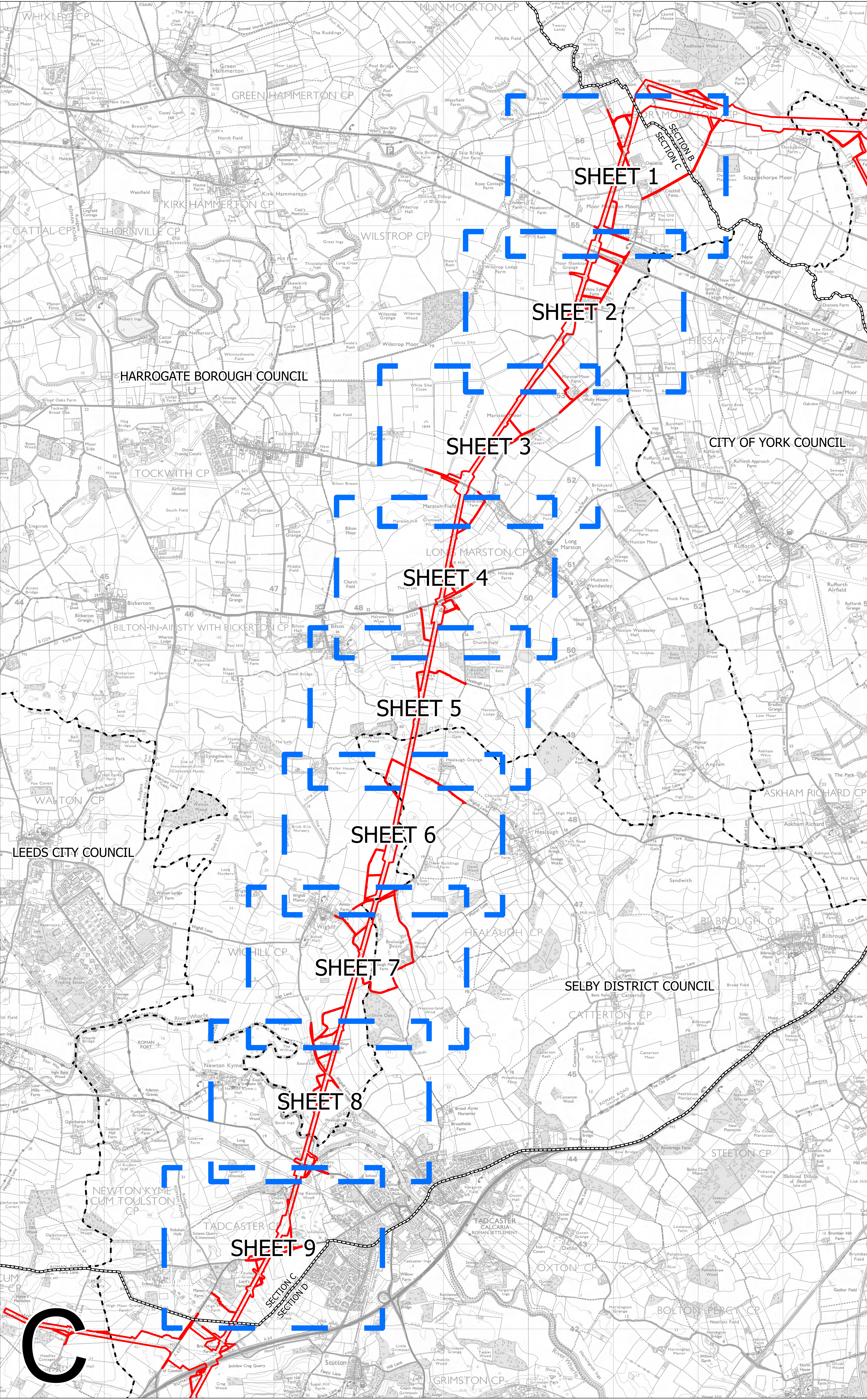


NATIONAL GRID (YORKSHIRE GREEN ENERGY ENABLEMENT PROJECT) ORDER  
 STATUTORY OR NON-STATUTORY SITES OR FEATURES OF NATURE CONSERVATION KEY PLAN  
 REGULATION 5(2)(I)(I)  
 SECTION C, SHEET 1 OF 1

SITE MAP



- LEGEND**
- LOCAL AUTHORITY BOUNDARY
  - - - SECTION BOUNDARY
  - ORDER LIMITS
  - SHEET INDEX



**Notes**

This drawing is scaled at paper size A0, therefore any prints taken at smaller sizes will affect accuracy of the measurement units and should not be scaled against.

For additional detail on the plan suites, please refer to Document 2.3 Plan Guidance Document, located in Volume 2 of the DCO Application.

The local authorities' boundaries and titles are correct at the time of submission. North Yorkshire County Council and its 7 districts are expected to form a new single council (North Yorkshire Council) on 1 April 2023.

Coordinate System: British National Grid  
 Sheet X Centroid Coordinate: 448887 Sheet Y Centroid Coordinate: 449414

0 200 400 800 1,200 1,600  
 Meters

BACKGROUND MAPPING INFORMATION HAS BEEN REPRODUCED FROM THE ORDNANCE SURVEY BY PERMISSION OF ORDNANCE SURVEY OF THE CONTROLLER OF HER MAJESTY'S STATIONERY OFFICE. CROWN COPYRIGHT ORDNANCE SURVEY © BLUESKY INTERNATIONAL LTD © NATIONAL GRID ELECTRICITY - 100024241.

Issue	Date	Remarks	Drawn	Checked	EMD
A	01/11/2022	FOR DCO SUBMISSION	MTH	SF	EMD

**Title**

NATIONAL GRID (YORKSHIRE GREEN ENERGY ENABLEMENT PROJECT) ORDER  
 STATUTORY OR NON-STATUTORY SITES OR FEATURES OF NATURE CONSERVATION  
 KEY PLAN  
 REGULATION 5(2)(I)(I)  
 SECTION C, SHEET 1 OF 1

**nationalgrid**

Application Number: EN020024

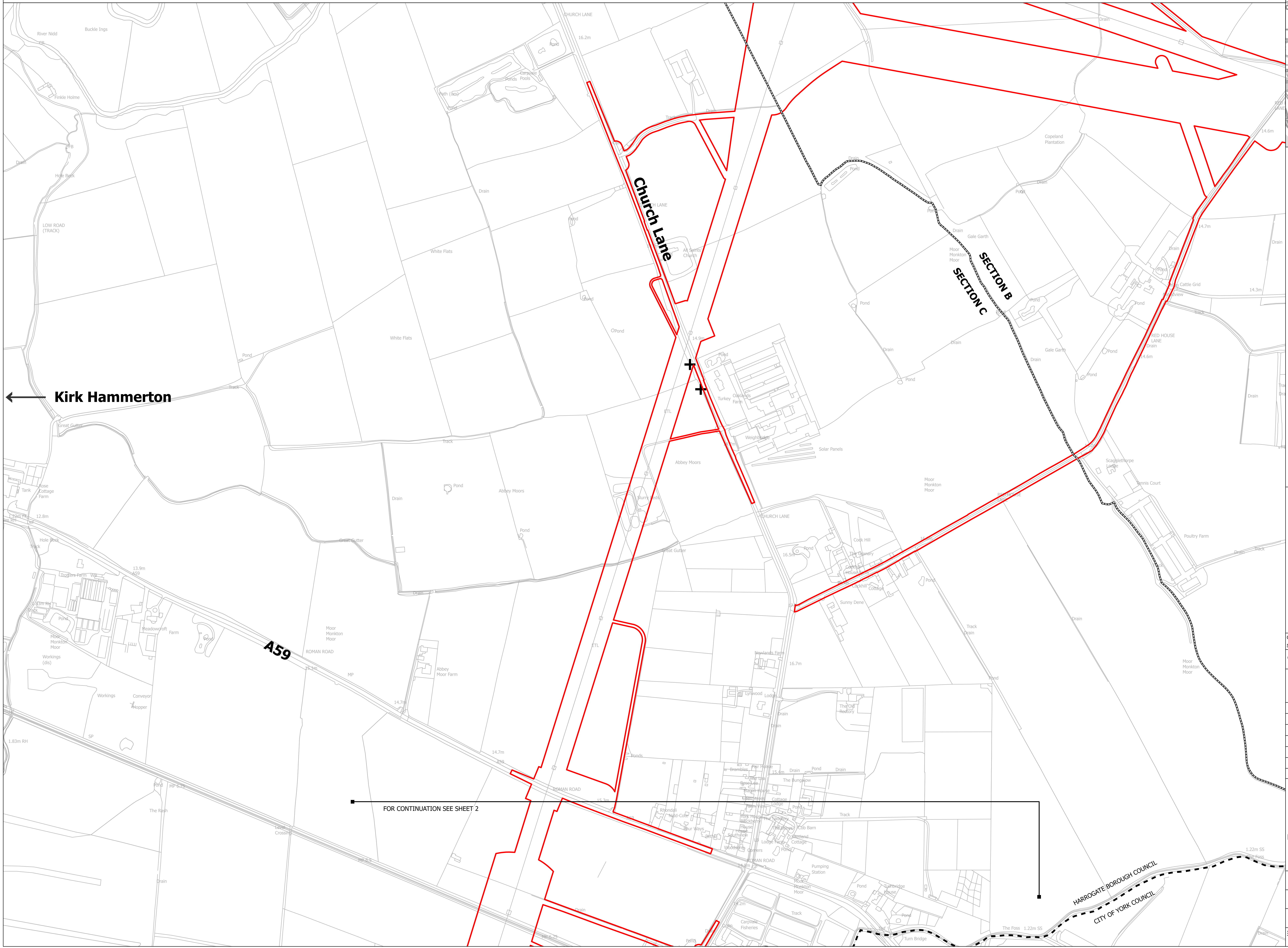
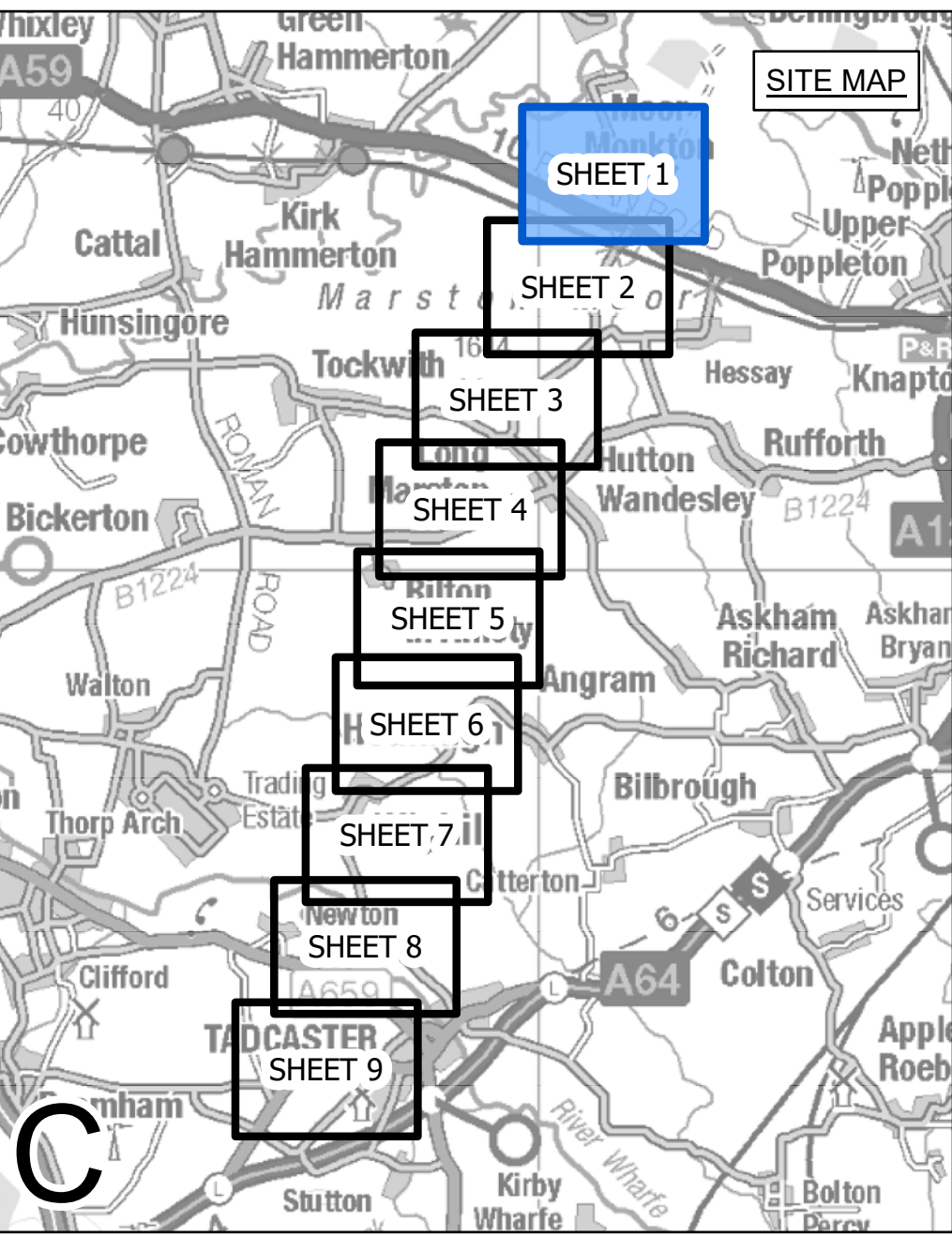
National Grid Drawing Reference: DCO\_C/NR/KP/01

Scale	Sheet Size	Sheet	Issue
1:15,000	A0	SHEET 1 OF 1	A





NATIONAL GRID (YORKSHIRE GREEN ENERGY ENABLEMENT PROJECT) ORDER  
 STATUTORY OR NON-STATUTORY SITES OR FEATURES OF NATURE CONSERVATION PLAN  
 REGULATION 5(2)(1)(i)  
 SECTION C, SHEET 1 OF 9



- LEGEND**
- ..... LOCAL AUTHORITY BOUNDARY
  - SECTION BOUNDARY
  - ORDER LIMITS
  - SITE OF INTEREST FOR NATURE CONSERVATION (SINC)
  - DELETED SITE OF INTEREST FOR NATURE CONSERVATION (SINC)
  - LOCALLY IMPORTANT LANDSCAPE AREA
  - CANDIDATE LOCALLY IMPORTANT LANDSCAPE AREA
  - ANCIENT WOODLAND
  - + VETERAN TREE

**Notes**

This drawing is scaled at paper size A0, therefore any prints taken at smaller sizes will affect accuracy of the measurement units and should not be scaled against.

For additional detail on the plan suites, please refer to Document 2.3 Plan Guidance Document, located in Volume 2 of the DCO Application.

The local authorities' boundaries and titles are correct at the time of submission. North Yorkshire County Council and its 7 districts are expected to form a new single council (North Yorkshire Council) on 1 April 2023.

The statutory site boundary information was obtained from the Multi-Agency Geographic Information for the Countryside (MAGIC) website. Non-statutory site data has been supplied by West Yorkshire Ecology Services and North and East Yorkshire Ecological Data Centre.

There are no sites of geological importance within the Order Limits on this plan.

Coordinate System: British National Grid  
 Sheet X Centroid Coordinate: 451042 Sheet Y Centroid Coordinate: 455585

BACKGROUND MAPPING INFORMATION HAS BEEN REPRODUCED FROM THE ORDNANCE SURVEY BY PERMISSION OF ORDNANCE SURVEY OF THE CONTROLLER OF HER MAJESTY'S STATIONERY OFFICE. CROWN COPYRIGHT ORDNANCE SURVEY ©. BLUESKY INTERNATIONAL LTD ©. NATIONAL GRID ELECTRICITY - 100024241.

Issue	Date	Remarks	Drawn	Checked	Approved
A	01/11/2022	FOR DCO SUBMISSION	MTH	SF	EMD

**Title**

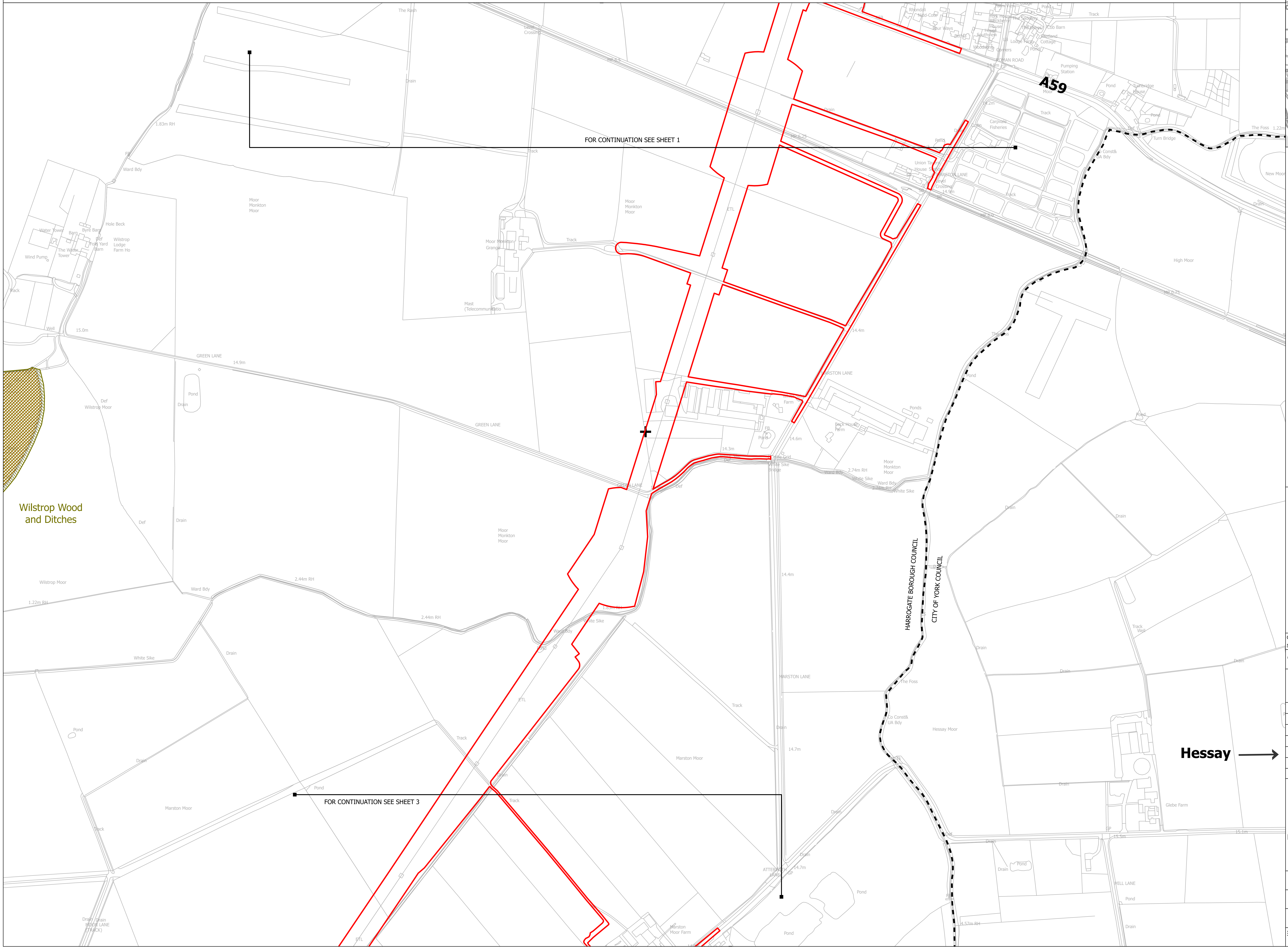
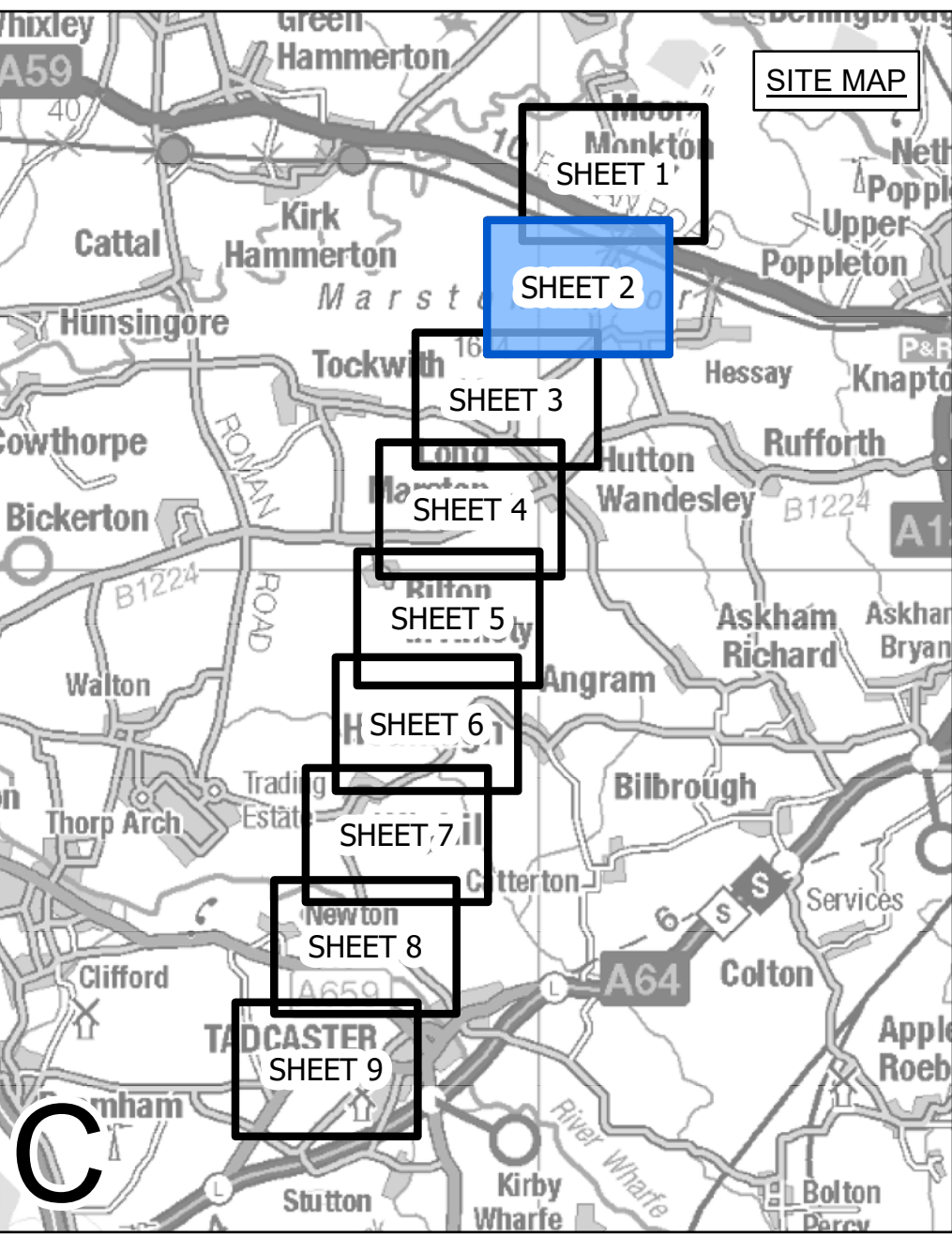
NATIONAL GRID (YORKSHIRE GREEN ENERGY ENABLEMENT PROJECT) ORDER  
 STATUTORY OR NON-STATUTORY SITES OR FEATURES OF NATURE CONSERVATION PLAN  
 REGULATION 5(2)(1)(i)  
 SECTION C, SHEET 1 OF 9

nationalgrid	
Application Number	EN020024
National Grid Drawing Reference	
DCO_C/NR/PS/01	
Scale	1:2,500
Sheet Size	A0
Sheet	SHEET 1 OF 9
Issue	A





NATIONAL GRID (YORKSHIRE GREEN ENERGY ENABLEMENT PROJECT) ORDER  
 STATUTORY OR NON-STATUTORY SITES OR FEATURES OF NATURE CONSERVATION PLAN  
 REGULATION 5(2)(1)(i)  
 SECTION C, SHEET 2 OF 9



- LEGEND**
- ..... LOCAL AUTHORITY BOUNDARY
  - SECTION BOUNDARY
  - ORDER LIMITS
  - SITE OF INTEREST FOR NATURE CONSERVATION (SINC)
  - DELETED SITE OF INTEREST FOR NATURE CONSERVATION (SINC)
  - LOCALLY IMPORTANT LANDSCAPE AREA
  - CANDIDATE LOCALLY IMPORTANT LANDSCAPE AREA
  - ANCIENT WOODLAND
  - + VETERAN TREE

**Notes**

This drawing is scaled at paper size A0, therefore any prints taken at smaller sizes will affect accuracy of the measurement units and should not be scaled against.

For additional detail on the plan suites, please refer to Document 2.3 Plan Guidance Document, located in Volume 2 of the DCO Application.

The local authorities' boundaries and titles are correct at the time of submission. North Yorkshire County Council and its 7 districts are expected to form a new single council (North Yorkshire Council) on 1 April 2023.

The statutory site boundary information was obtained from the Multi-Agency Geographic Information for the Countryside (MAGIC) website. Non-statutory site data has been supplied by West Yorkshire Ecology Services and North and East Yorkshire Ecological Data Centre.

There are no sites of geological importance within the Order Limits on this plan.

Coordinate System: British National Grid  
 Sheet X Centroid Coordinate: 450545 Sheet Y Centroid Coordinate: 453987

BACKGROUND MAPPING INFORMATION HAS BEEN REPRODUCED FROM THE ORDNANCE SURVEY BY PERMISSION OF ORDNANCE SURVEY OF THE CONTROLLER OF HER MAJESTY'S STATIONERY OFFICE. CROWN COPYRIGHT ORDNANCE SURVEY ©. BLUESKY INTERNATIONAL LTD ©. NATIONAL GRID ELECTRICITY - 100024241.

Issue	Date	Remarks	Drawn	Checked	Approved
A	01/11/2022	FOR DCO SUBMISSION	MTH	SF	EMD

Title

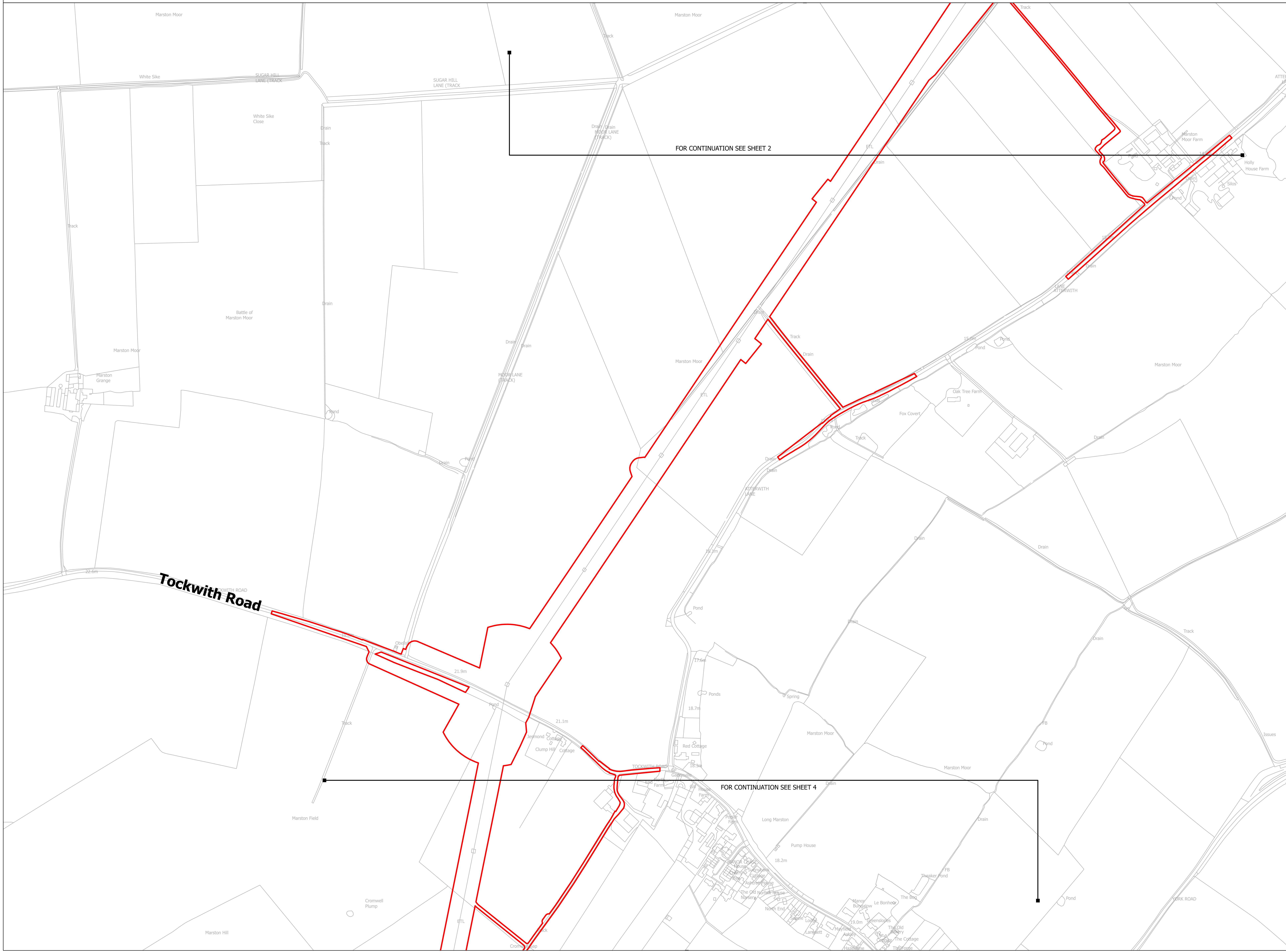
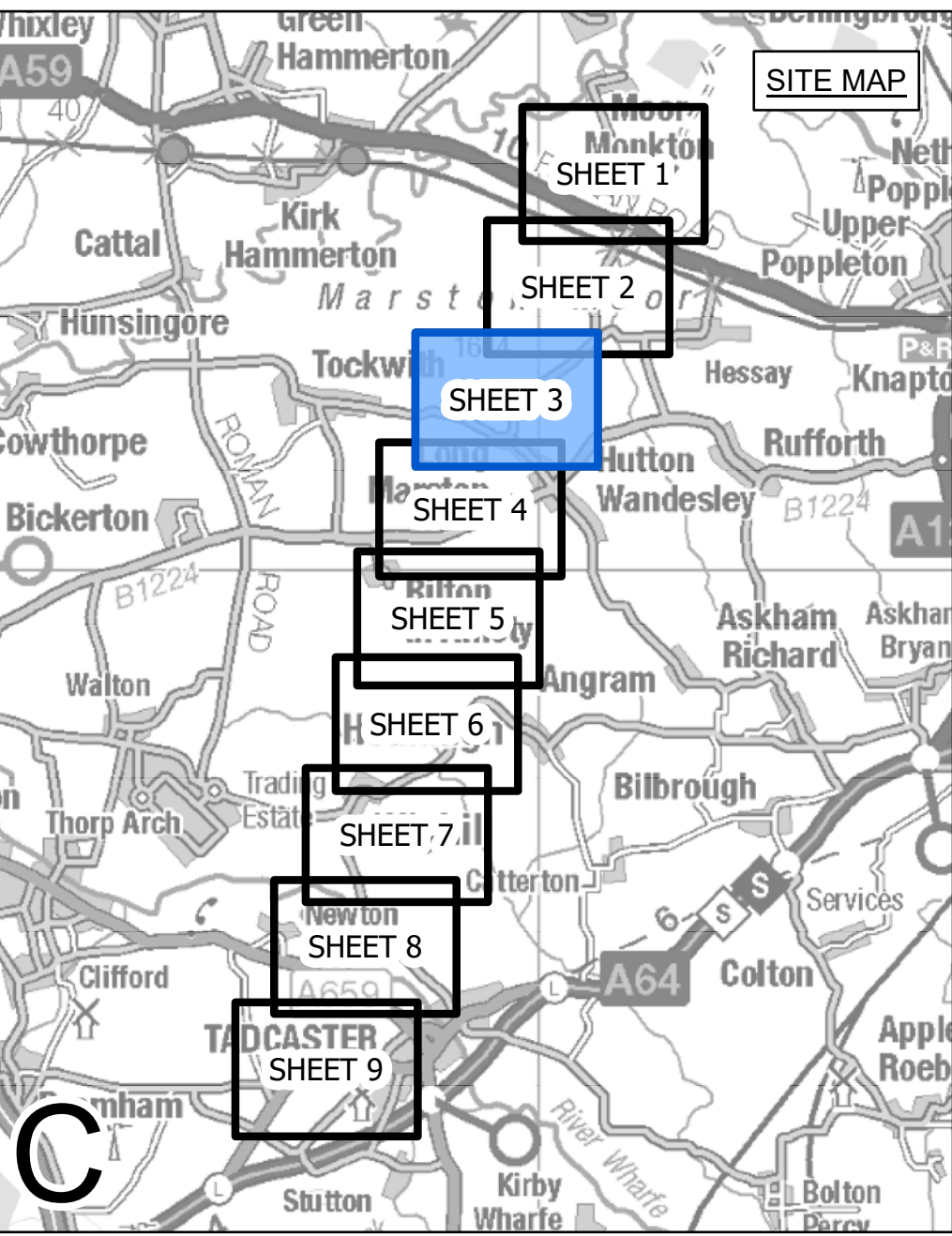
NATIONAL GRID  
 (YORKSHIRE GREEN ENERGY  
 ENABLEMENT PROJECT) ORDER  
 STATUTORY OR NON-STATUTORY SITES OR  
 FEATURES OF NATURE CONSERVATION PLAN  
 REGULATION 5(2)(1)(i)  
 SECTION C, SHEET 2 OF 9

nationalgrid	
Application Number	EN020024
National Grid Drawing Reference DCO_C/NR/PS/02	
Scale	1:2,500
Sheet Size	A0
Sheet	SHEET 2 OF 9
Issue	A





NATIONAL GRID (YORKSHIRE GREEN ENERGY ENABLEMENT PROJECT) ORDER  
 STATUTORY OR NON-STATUTORY SITES OR FEATURES OF NATURE CONSERVATION PLAN  
 REGULATION 5(2)(1)(i)  
 SECTION C, SHEET 3 OF 9



FOR CONTINUATION SEE SHEET 2

FOR CONTINUATION SEE SHEET 4

- LEGEND**
- ..... LOCAL AUTHORITY BOUNDARY
  - SECTION BOUNDARY
  - ORDER LIMITS
  - SITE OF INTEREST FOR NATURE CONSERVATION (SINC)
  - DELETED SITE OF INTEREST FOR NATURE CONSERVATION (SINC)
  - LOCALLY IMPORTANT LANDSCAPE AREA
  - CANDIDATE LOCALLY IMPORTANT LANDSCAPE AREA
  - ANCIENT WOODLAND
  - + VETERAN TREE

**Notes**

This drawing is scaled at paper size A0, therefore any prints taken at smaller sizes will affect accuracy of the measurement units and should not be scaled against.

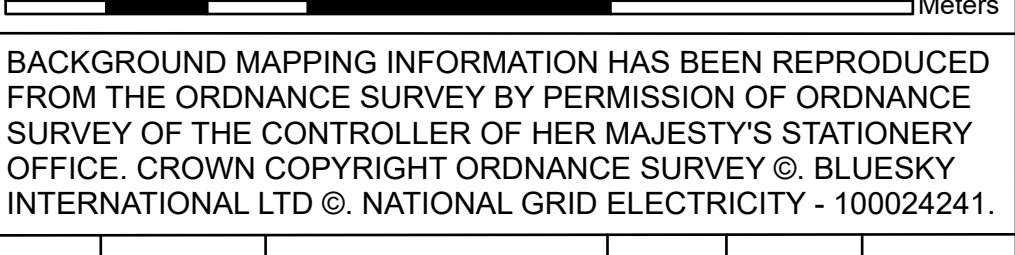
For additional detail on the plan suites, please refer to Document 2.3 Plan Guidance Document, located in Volume 2 of the DCO Application.

The local authorities' boundaries and titles are correct at the time of submission. North Yorkshire County Council and its 7 districts are expected to form a new single council (North Yorkshire Council) on 1 April 2023.

The statutory site boundary information was obtained from the Multi-Agency Geographic Information for the Countryside (MAGIC) website. Non-statutory site data has been supplied by West Yorkshire Ecology Services and North and East Yorkshire Ecological Data Centre.

There are no sites of geological importance within the Order Limits on this plan.

Coordinate System: British National Grid  
 Sheet X Centroid Coordinate: 449533 Sheet Y Centroid Coordinate: 452403



BACKGROUND MAPPING INFORMATION HAS BEEN REPRODUCED FROM THE ORDNANCE SURVEY BY PERMISSION OF ORDNANCE SURVEY OF THE CONTROLLER OF HER MAJESTY'S STATIONERY OFFICE. CROWN COPYRIGHT ORDNANCE SURVEY ©. BLUESKY INTERNATIONAL LTD ©. NATIONAL GRID ELECTRICITY - 100024241.

Issue	Date	Remarks	Drawn	Checked	Approved
A	01/11/2022	FOR DCO SUBMISSION	MTH	SF	EMD

**Title**

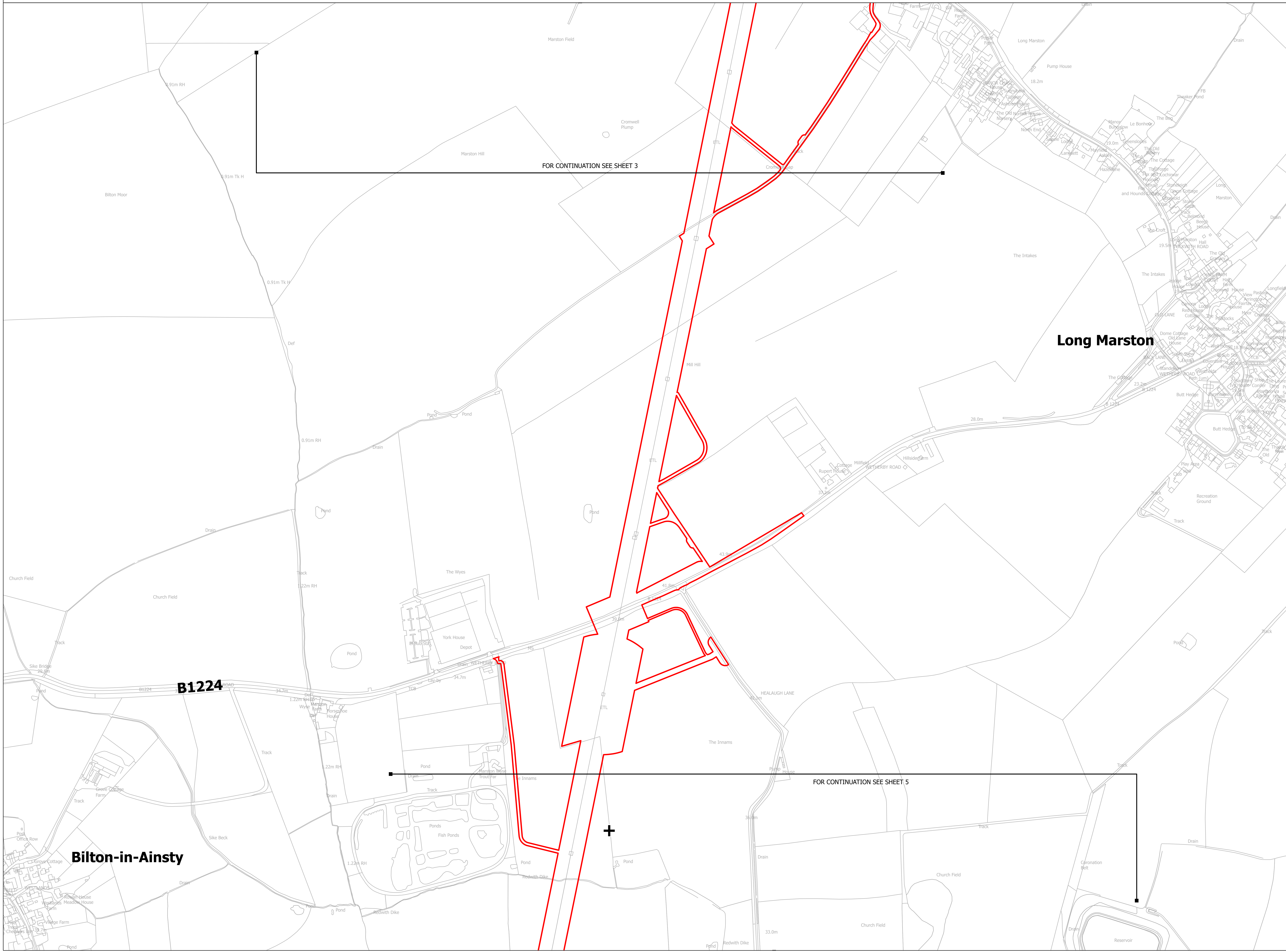
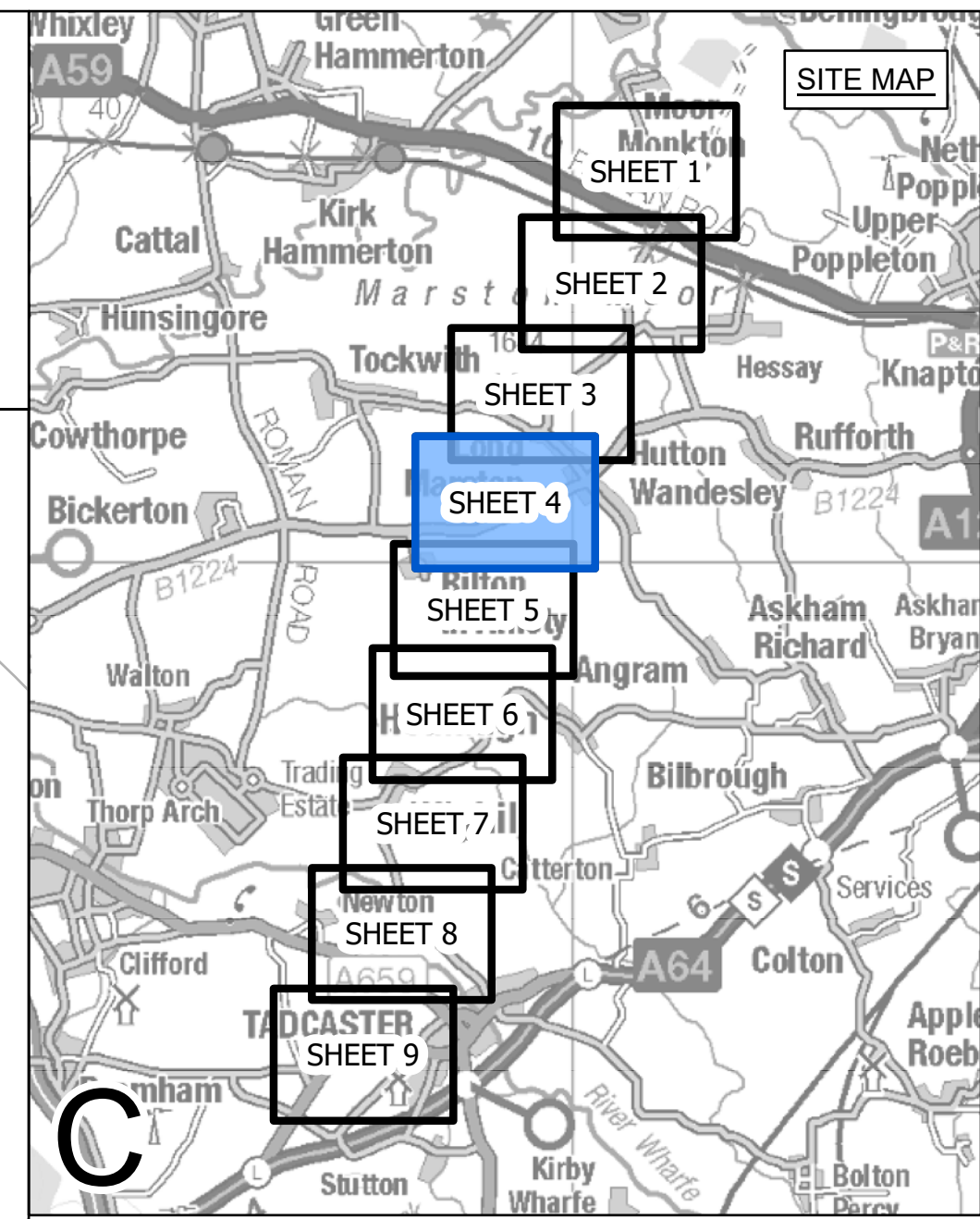
NATIONAL GRID  
 (YORKSHIRE GREEN ENERGY  
 ENABLEMENT PROJECT) ORDER  
 STATUTORY OR NON-STATUTORY SITES OR  
 FEATURES OF NATURE CONSERVATION PLAN  
 REGULATION 5(2)(1)(i)  
 SECTION C, SHEET 3 OF 9

<b>nationalgrid</b>			
<b>Application Number</b>		EN020024	
<b>National Grid Drawing Reference</b>			
DCO_C/NR/PS/03			
<b>Scale</b>	<b>Sheet Size</b>	<b>Sheet</b>	<b>Issue</b>
1:2,500	A0	SHEET 3 OF 9	A





NATIONAL GRID (YORKSHIRE GREEN ENERGY ENABLEMENT PROJECT) ORDER  
 STATUTORY OR NON-STATUTORY SITES OR FEATURES OF NATURE CONSERVATION PLAN  
 REGULATION 5(2)(1)(i)  
 SECTION C, SHEET 4 OF 9



- LEGEND**
- ..... LOCAL AUTHORITY BOUNDARY
  - SECTION BOUNDARY
  - ORDER LIMITS
  - SITE OF INTEREST FOR NATURE CONSERVATION (SINC)
  - DELETED SITE OF INTEREST FOR NATURE CONSERVATION (SINC)
  - LOCALLY IMPORTANT LANDSCAPE AREA
  - CANDIDATE LOCALLY IMPORTANT LANDSCAPE AREA
  - ANCIENT WOODLAND
  - + VETERAN TREE

**Notes**

This drawing is scaled at paper size A0, therefore any prints taken at smaller sizes will affect accuracy of the measurement units and should not be scaled against.

For additional detail on the plan suites, please refer to Document 2.3 Plan Guidance Document, located in Volume 2 of the DCO Application.

The local authorities' boundaries and titles are correct at the time of submission. North Yorkshire County Council and its 7 districts are expected to form a new single council (North Yorkshire Council) on 1 April 2023.

The statutory site boundary information was obtained from the Multi-Agency Geographic Information for the Countryside (MAGIC) website. Non-statutory site data has been supplied by West Yorkshire Ecology Services and North and East Yorkshire Ecological Data Centre.

There are no sites of geological importance within the Order Limits on this plan.

Coordinate System: British National Grid  
 Sheet X Centroid Coordinate: 449024 Sheet Y Centroid Coordinate: 450854

0 100 200 300 Meters

BACKGROUND MAPPING INFORMATION HAS BEEN REPRODUCED FROM THE ORDNANCE SURVEY BY PERMISSION OF ORDNANCE SURVEY OF THE CONTROLLER OF HER MAJESTY'S STATIONERY OFFICE. CROWN COPYRIGHT ORDNANCE SURVEY ©. BLUESKY INTERNATIONAL LTD ©. NATIONAL GRID ELECTRICITY - 100024241.

Issue	Date	Remarks	Drawn	Checked	Approved
A	01/11/2022	FOR DCO SUBMISSION	MTH	SF	EMD

Title

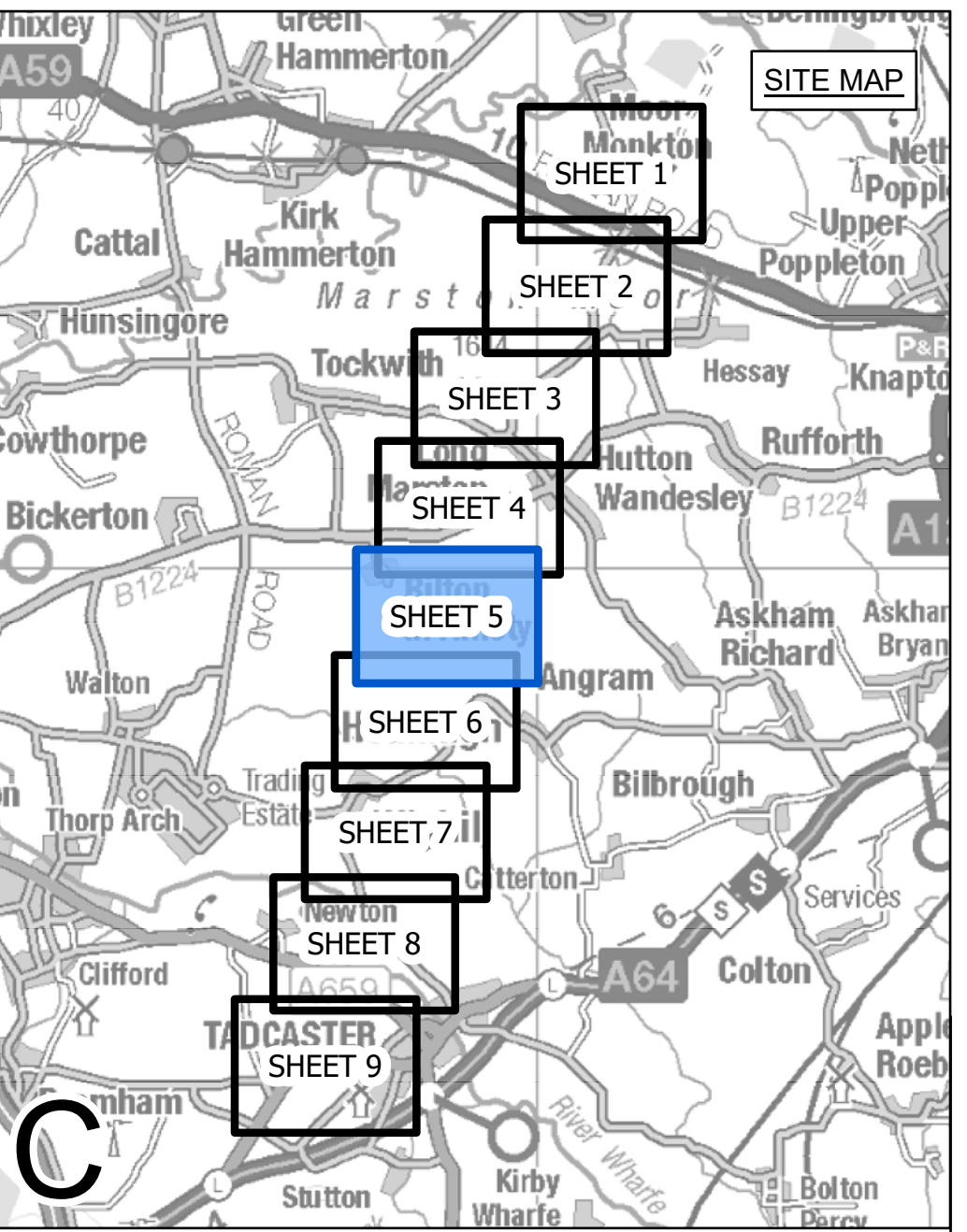
NATIONAL GRID  
 (YORKSHIRE GREEN ENERGY  
 ENABLEMENT PROJECT) ORDER  
 STATUTORY OR NON-STATUTORY SITES OR  
 FEATURES OF NATURE CONSERVATION PLAN  
 REGULATION 5(2)(1)(i)  
 SECTION C, SHEET 4 OF 9

Application Number		EN020024		
National Grid Drawing Reference		DCO_C/NR/PS/04		
Scale	Sheet Size	Sheet	Issue	
1:2,500	A0	SHEET 4 OF 9	A	





NATIONAL GRID (YORKSHIRE GREEN ENERGY ENABLEMENT PROJECT) ORDER  
 STATUTORY OR NON-STATUTORY SITES OR FEATURES OF NATURE CONSERVATION PLAN  
 REGULATION 5(2)(1)(i)  
 SECTION C, SHEET 5 OF 9



- LEGEND**
- ..... LOCAL AUTHORITY BOUNDARY
  - SECTION BOUNDARY
  - ORDER LIMITS
  - SITE OF INTEREST FOR NATURE CONSERVATION (SINC)
  - DELETED SITE OF INTEREST FOR NATURE CONSERVATION (SINC)
  - LOCALLY IMPORTANT LANDSCAPE AREA
  - CANDIDATE LOCALLY IMPORTANT LANDSCAPE AREA
  - ANCIENT WOODLAND
  - + VETERAN TREE

**Notes**

This drawing is scaled at paper size A0, therefore any prints taken at smaller sizes will affect accuracy of the measurement units and should not be scaled against.

For additional detail on the plan suites, please refer to Document 2.3 Plan Guidance Document, located in Volume 2 of the DCO Application.

The local authorities' boundaries and titles are correct at the time of submission. North Yorkshire County Council and its 7 districts are expected to form a new single council (North Yorkshire Council) on 1 April 2023.

The statutory site boundary information was obtained from the Multi-Agency Geographic Information for the Countryside (MAGIC) website. Non-statutory site data has been supplied by West Yorkshire Ecology Services and North and East Yorkshire Ecological Data Centre.

There are no sites of geological importance within the Order Limits on this plan.

Coordinate System: British National Grid  
 Sheet X Centroid Coordinate: 448712 Sheet Y Centroid Coordinate: 449318

BACKGROUND MAPPING INFORMATION HAS BEEN REPRODUCED FROM THE ORDNANCE SURVEY BY PERMISSION OF ORDNANCE SURVEY OF THE CONTROLLER OF HER MAJESTY'S STATIONERY OFFICE. CROWN COPYRIGHT ORDNANCE SURVEY ©. BLUESKY INTERNATIONAL LTD ©. NATIONAL GRID ELECTRICITY - 100024241.

Issue	Date	Remarks	Drawn	Checked	Approved
A	01/11/2022	FOR DCO SUBMISSION	MTH	SF	EMD

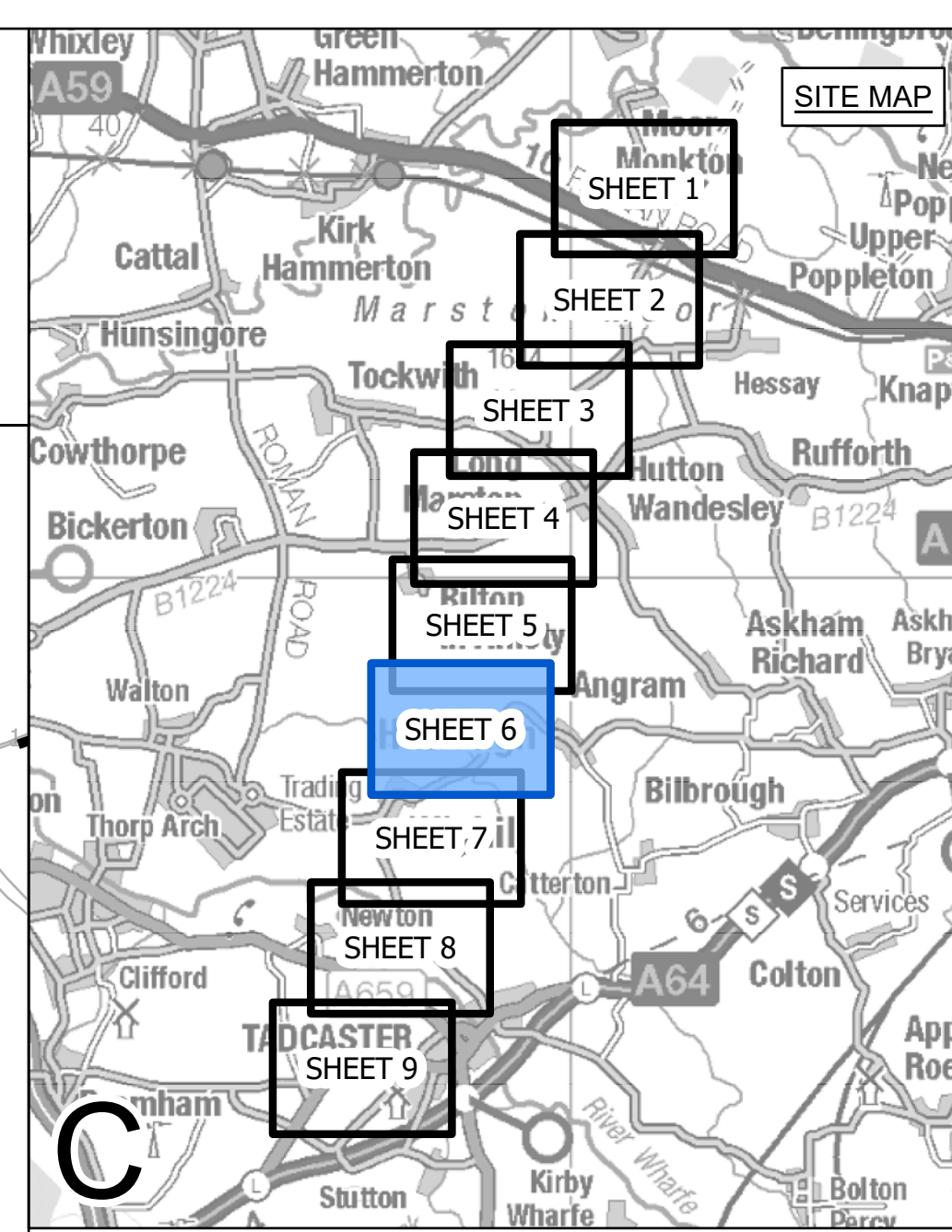
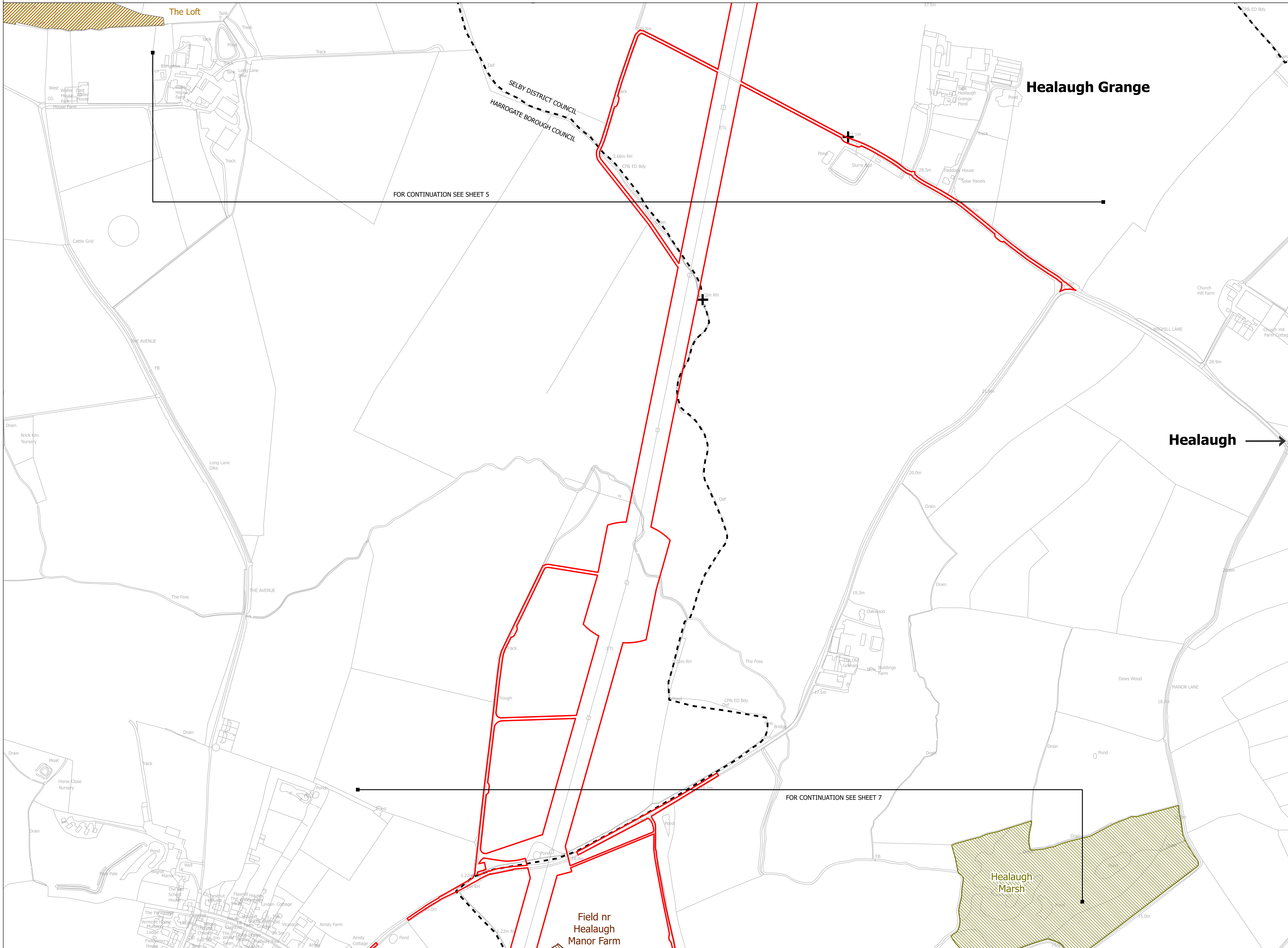
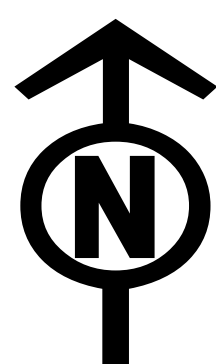
**Title**

NATIONAL GRID  
 (YORKSHIRE GREEN ENERGY  
 ENABLEMENT PROJECT) ORDER  
 STATUTORY OR NON-STATUTORY SITES OR  
 FEATURES OF NATURE CONSERVATION PLAN  
 REGULATION 5(2)(1)(i)  
 SECTION C, SHEET 5 OF 9

nationalgrid			
Application Number	EN020024		
National Grid Drawing Reference DCO_C/NR/PS/05			
Scale	Sheet Size	Sheet	Issue
1:2,500	A0	SHEET 5 OF 9	A



NATIONAL GRID (YORKSHIRE GREEN ENERGY ENABLEMENT PROJECT) ORDER  
 STATUTORY OR NON-STATUTORY SITES OR FEATURES OF NATURE CONSERVATION PLAN  
 REGULATION 5(2)(1)(i)  
 SECTION C, SHEET 6 OF 9



- LEGEND**
- ..... LOCAL AUTHORITY BOUNDARY
  - SECTION BOUNDARY
  - ORDER LIMITS
  - SITE OF INTEREST FOR NATURE CONSERVATION (SINC)
  - DELETED SITE OF INTEREST FOR NATURE CONSERVATION (SINC)
  - LOCALLY IMPORTANT LANDSCAPE AREA
  - CANDIDATE LOCALLY IMPORTANT LANDSCAPE AREA
  - ANCIENT WOODLAND
  - + VETERAN TREE

**Notes**

This drawing is scaled at paper size A0, therefore any prints taken at smaller sizes will affect accuracy of the measurement units and should not be scaled against.

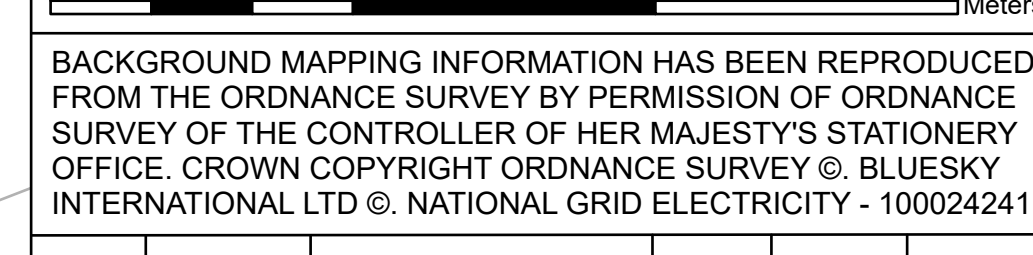
For additional detail on the plan suites, please refer to Document 2.3 Plan Guidance Document, located in Volume 2 of the DCO Application.

The local authorities' boundaries and titles are correct at the time of submission. North Yorkshire County Council and its 7 districts are expected to form a new single council (North Yorkshire Council) on 1 April 2023.

The statutory site boundary information was obtained from the Multi-Agency Geographic Information for the Countryside (MAGIC) website. Non-statutory site data has been supplied by West Yorkshire Ecology Services and North and East Yorkshire Ecological Data Centre.

There are no sites of geological importance within the Order Limits on this plan.

Coordinate System: British National Grid  
 Sheet X Centroid Coordinate: 448409 Sheet Y Centroid Coordinate: 447826



BACKGROUND MAPPING INFORMATION HAS BEEN REPRODUCED FROM THE ORDNANCE SURVEY BY PERMISSION OF ORDNANCE SURVEY OF THE CONTROLLER OF HER MAJESTY'S STATIONERY OFFICE. CROWN COPYRIGHT ORDNANCE SURVEY ©. BLUESKY INTERNATIONAL LTD ©. NATIONAL GRID ELECTRICITY - 100024241.

Issue	Date	Remarks	Drawn	Checked	Approved
A	01/11/2022	FOR DCO SUBMISSION	MTH	SF	EMD

**Title**

NATIONAL GRID  
 (YORKSHIRE GREEN ENERGY  
 ENABLEMENT PROJECT) ORDER  
 STATUTORY OR NON-STATUTORY SITES OR  
 FEATURES OF NATURE CONSERVATION PLAN  
 REGULATION 5(2)(1)(i)  
 SECTION C, SHEET 6 OF 9



Application Number: EN020024

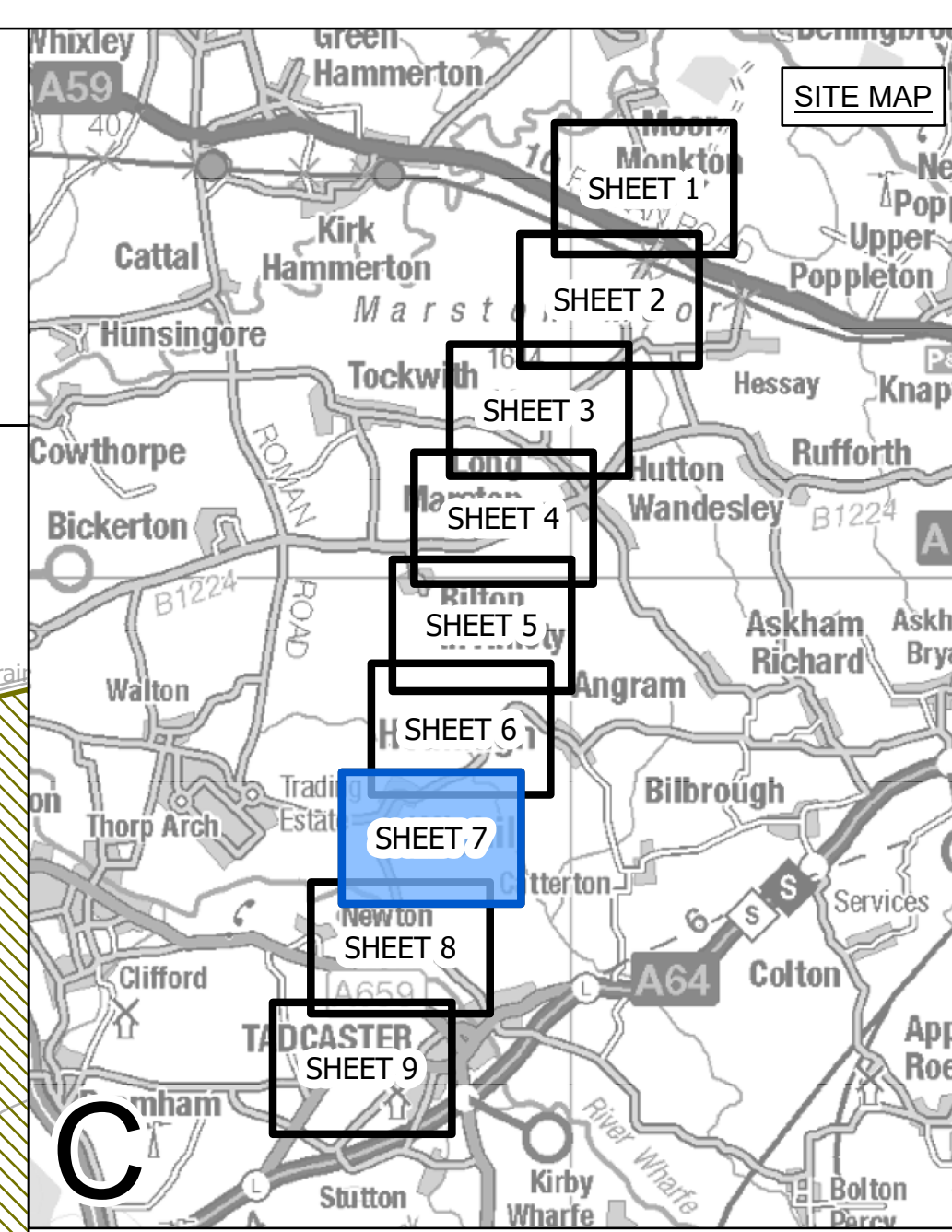
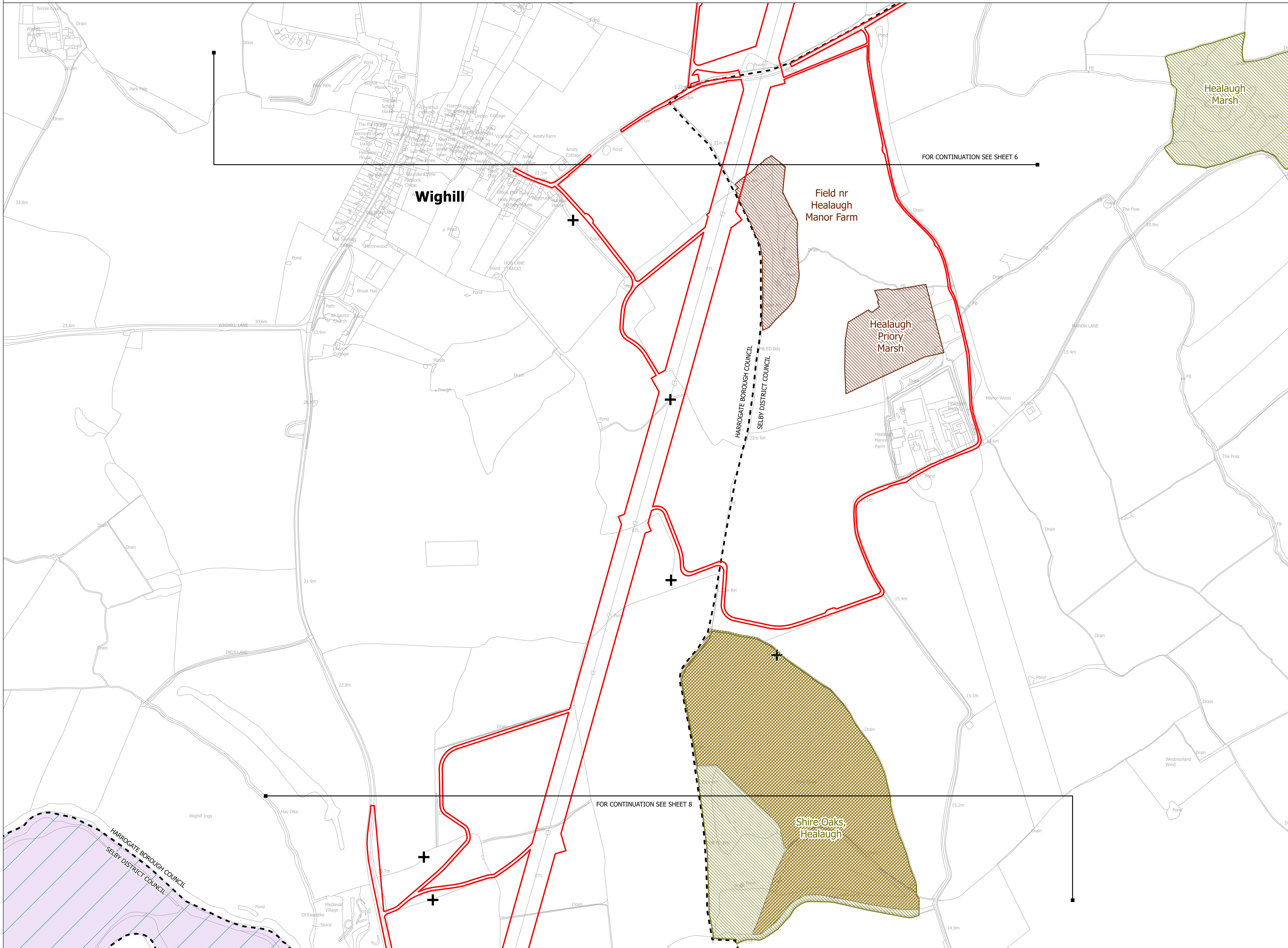
National Grid Drawing Reference: DCO\_C/NR/PS/06

Scale	Sheet Size	Sheet	Issue
1:2,500	A0	SHEET 6 OF 9	A





NATIONAL GRID (YORKSHIRE GREEN ENERGY ENABLEMENT PROJECT) ORDER  
 STATUTORY OR NON-STATUTORY SITES OR FEATURES OF NATURE CONSERVATION PLAN  
 REGULATION 5(2)(1)(i)  
 SECTION C, SHEET 7 OF 9



- LEGEND**
- ..... LOCAL AUTHORITY BOUNDARY
  - SECTION BOUNDARY
  - ORDER LIMITS
  - SITE OF INTEREST FOR NATURE CONSERVATION (SINC)
  - DELETED SITE OF INTEREST FOR NATURE CONSERVATION (SINC)
  - LOCALLY IMPORTANT LANDSCAPE AREA
  - CANDIDATE LOCALLY IMPORTANT LANDSCAPE AREA
  - ANCIENT WOODLAND
  - + VETERAN TREE

**Notes**

This drawing is scaled at paper size A0, therefore any prints taken at smaller sizes will affect accuracy of the measurement units and should not be scaled against.

For additional detail on the plan suites, please refer to Document 2.3 Plan Guidance Document, located in Volume 2 of the DCO Application.

The local authorities' boundaries and titles are correct at the time of submission. North Yorkshire County Council and its 7 districts are expected to form a new single council (North Yorkshire Council) on 1 April 2023.

The statutory site boundary information was obtained from the Multi-Agency Geographic Information for the Countryside (MAGIC) website. Non-statutory site data has been supplied by West Yorkshire Ecology Services and North and East Yorkshire Ecological Data Centre.

There are no sites of geological importance within the Order Limits on this plan.

Coordinate System: British National Grid  
 Sheet X Centroid Coordinate: 447986 Sheet Y Centroid Coordinate: 446280

BACKGROUND MAPPING INFORMATION HAS BEEN REPRODUCED FROM THE ORDNANCE SURVEY BY PERMISSION OF ORDNANCE SURVEY OF THE CONTROLLER OF HER MAJESTY'S STATIONERY OFFICE. CROWN COPYRIGHT ORDNANCE SURVEY ©. BLUESKY INTERNATIONAL LTD ©. NATIONAL GRID ELECTRICITY - 100024241.

Issue	Date	Remarks	Drawn	Checked	Approved
A	01/11/2022	FOR DCO SUBMISSION	MTH	SF	EMD

**Title**

NATIONAL GRID (YORKSHIRE GREEN ENERGY ENABLEMENT PROJECT) ORDER  
 STATUTORY OR NON-STATUTORY SITES OR FEATURES OF NATURE CONSERVATION PLAN  
 REGULATION 5(2)(1)(i)  
 SECTION C, SHEET 7 OF 9

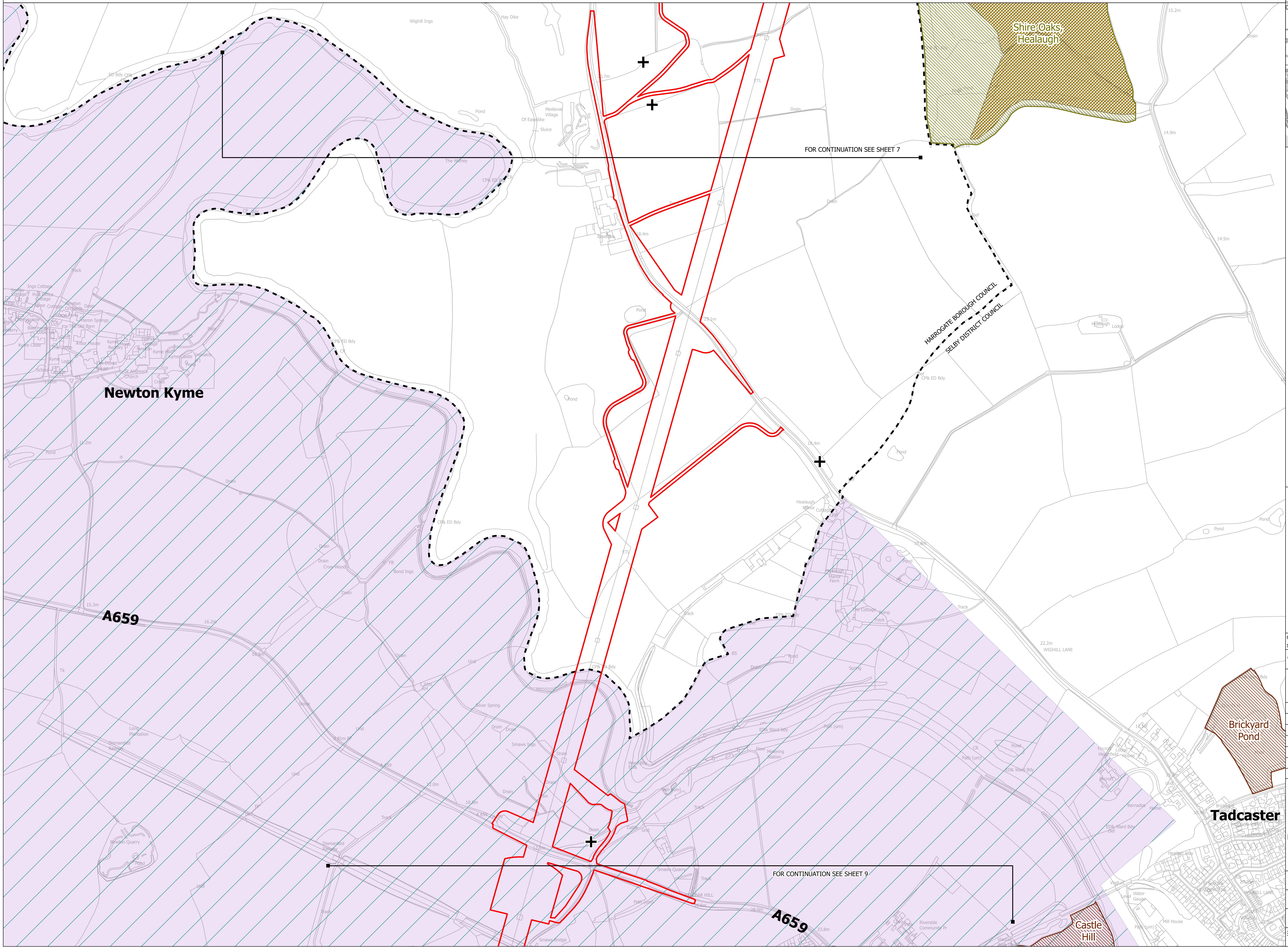
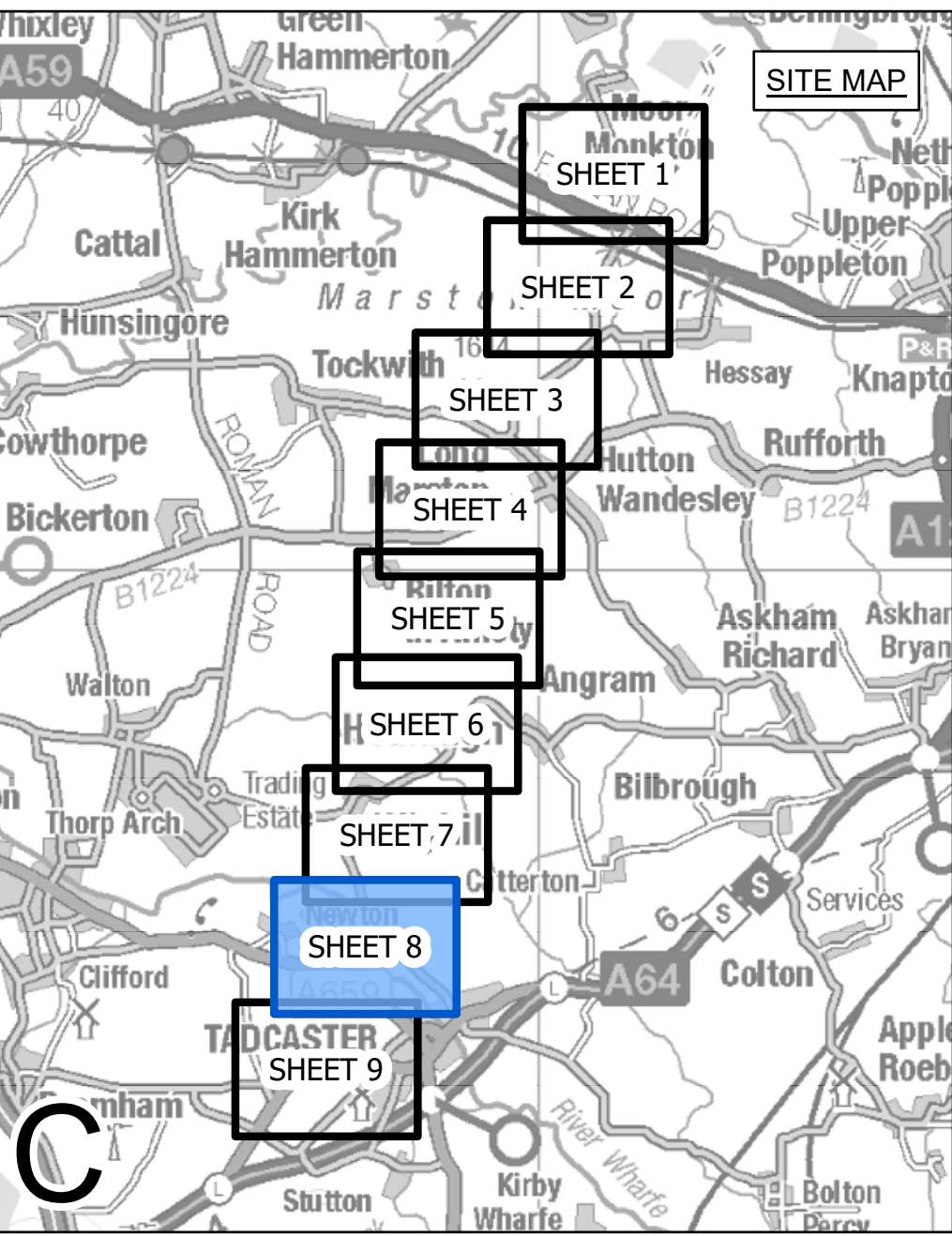
**nationalgrid**

Application Number: EN020024  
 National Grid Drawing Reference: DCO\_C/NR/PS/07  
 Scale: 1:2,500 Sheet Size: A0 Sheet: SHEET 7 OF 9 Issue: A





NATIONAL GRID (YORKSHIRE GREEN ENERGY ENABLEMENT PROJECT) ORDER  
 STATUTORY OR NON-STATUTORY SITES OR FEATURES OF NATURE CONSERVATION PLAN  
 REGULATION 5(2)(1)(i)  
 SECTION C, SHEET 8 OF 9



- LEGEND**
- ..... LOCAL AUTHORITY BOUNDARY
  - SECTION BOUNDARY
  - ORDER LIMITS
  - SITE OF INTEREST FOR NATURE CONSERVATION (SINC)
  - DELETED SITE OF INTEREST FOR NATURE CONSERVATION (SINC)
  - LOCALLY IMPORTANT LANDSCAPE AREA
  - CANDIDATE LOCALLY IMPORTANT LANDSCAPE AREA
  - ANCIENT WOODLAND
  - + VETERAN TREE

**Notes**

This drawing is scaled at paper size A0, therefore any prints taken at smaller sizes will affect accuracy of the measurement units and should not be scaled against.

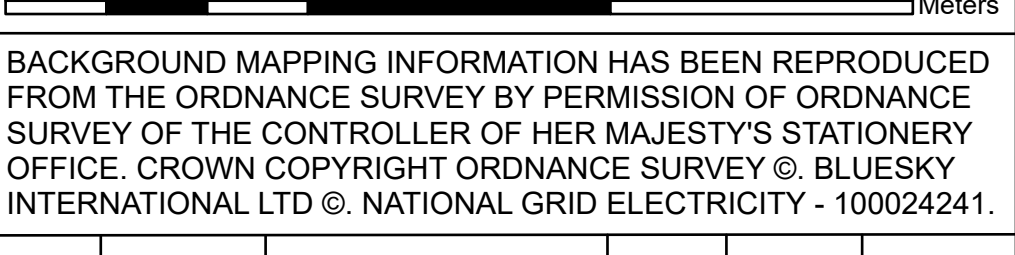
For additional detail on the plan suites, please refer to Document 2.3 Plan Guidance Document, located in Volume 2 of the DCO Application.

The local authorities' boundaries and titles are correct at the time of submission. North Yorkshire County Council and its 7 districts are expected to form a new single council (North Yorkshire Council) on 1 April 2023.

The statutory site boundary information was obtained from the Multi-Agency Geographic Information for the Countryside (MAGIC) website. Non-statutory site data has been supplied by West Yorkshire Ecology Services and North and East Yorkshire Ecological Data Centre.

There are no sites of geological importance within the Order Limits on this plan.

Coordinate System: British National Grid  
 Sheet X Centroid Coordinate: 447542 Sheet Y Centroid Coordinate: 444682



BACKGROUND MAPPING INFORMATION HAS BEEN REPRODUCED FROM THE ORDNANCE SURVEY BY PERMISSION OF ORDNANCE SURVEY OF THE CONTROLLER OF HER MAJESTY'S STATIONERY OFFICE. CROWN COPYRIGHT ORDNANCE SURVEY ©. BLUESKY INTERNATIONAL LTD ©. NATIONAL GRID ELECTRICITY - 100024241.

Issue	Date	Remarks	Drawn	Checked	Approved
A	01/11/2022	FOR DCO SUBMISSION	MTH	SF	EMD

**Title**

NATIONAL GRID (YORKSHIRE GREEN ENERGY ENABLEMENT PROJECT) ORDER  
 STATUTORY OR NON-STATUTORY SITES OR FEATURES OF NATURE CONSERVATION PLAN  
 REGULATION 5(2)(1)(i)  
 SECTION C, SHEET 8 OF 9



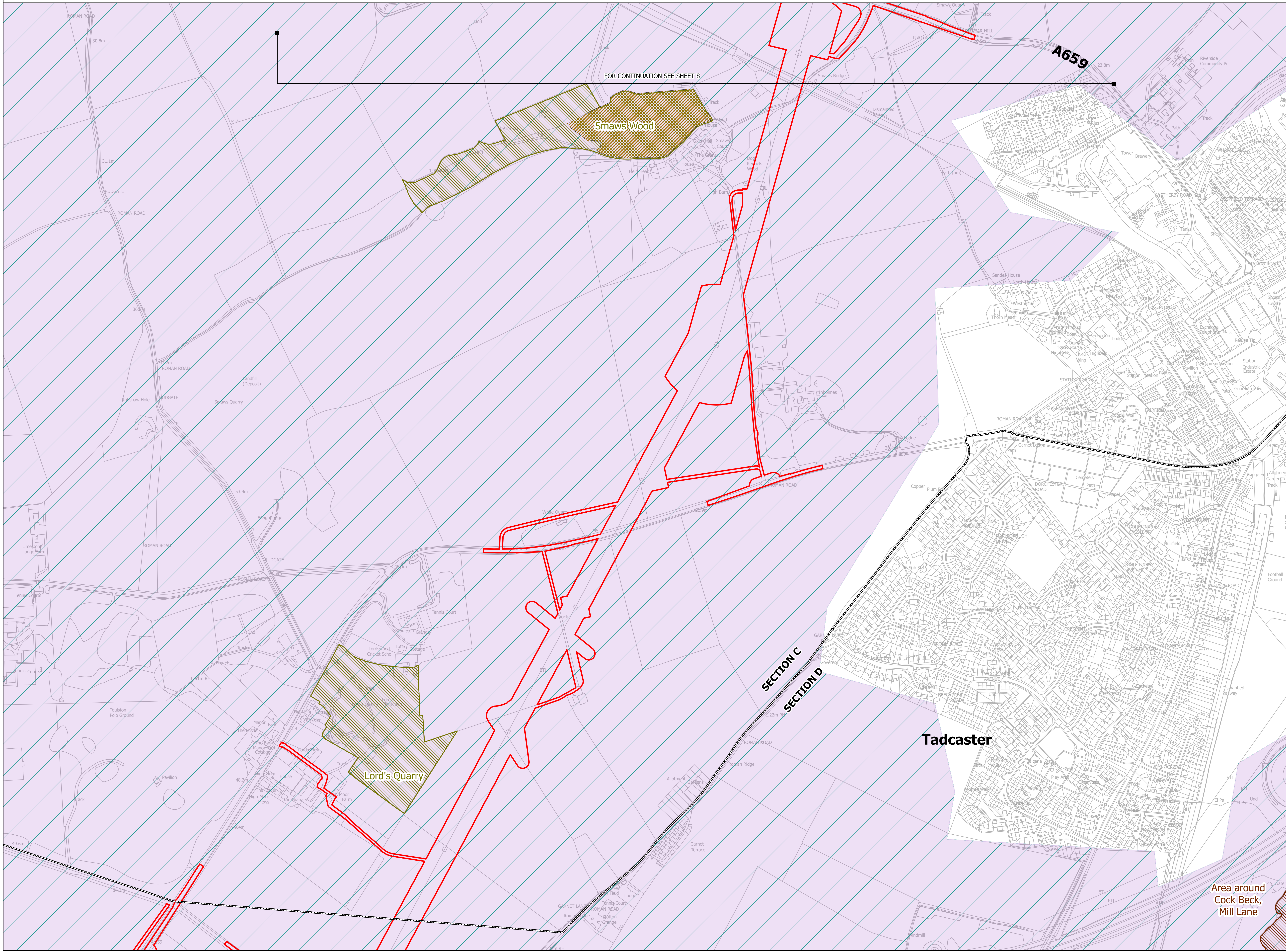
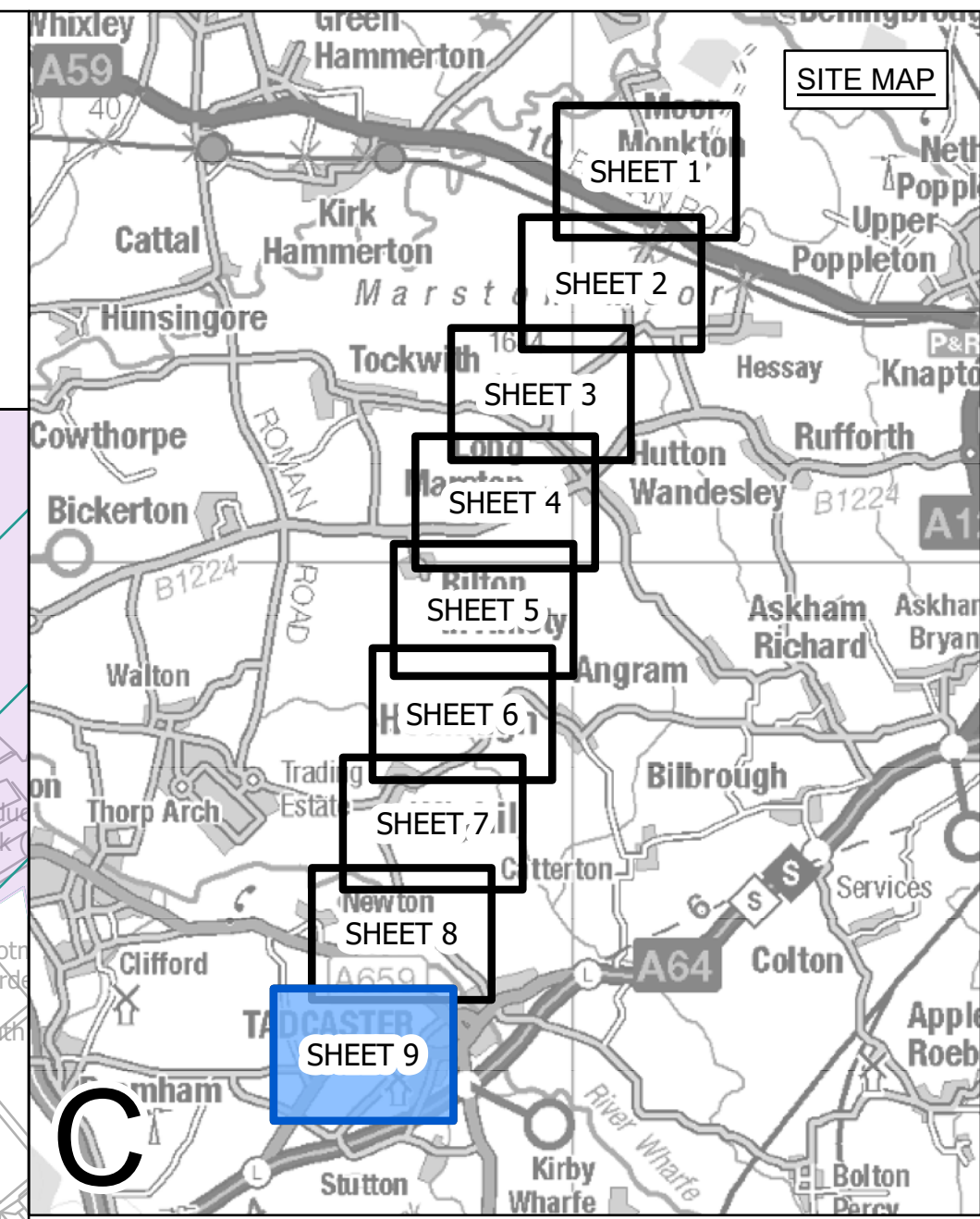
Application Number: EN020024  
 National Grid Drawing Reference: DCO\_C/NR/PS/08

Scale	Sheet Size	Sheet	Issue
1:2,500	A0	SHEET 8 OF 9	A





NATIONAL GRID (YORKSHIRE GREEN ENERGY ENABLEMENT PROJECT) ORDER  
 STATUTORY OR NON-STATUTORY SITES OR FEATURES OF NATURE CONSERVATION PLAN  
 REGULATION 5(2)(1)(i)  
 SECTION C, SHEET 9 OF 9



- LEGEND**
- ..... LOCAL AUTHORITY BOUNDARY
  - SECTION BOUNDARY
  - ORDER LIMITS
  - SITE OF INTEREST FOR NATURE CONSERVATION (SINC)
  - DELETED SITE OF INTEREST FOR NATURE CONSERVATION (SINC)
  - LOCALLY IMPORTANT LANDSCAPE AREA
  - CANDIDATE LOCALLY IMPORTANT LANDSCAPE AREA
  - ANCIENT WOODLAND
  - + VETERAN TREE

**Notes**

This drawing is scaled at paper size A0, therefore any prints taken at smaller sizes will affect accuracy of the measurement units and should not be scaled against.

For additional detail on the plan suites, please refer to Document 2.3 Plan Guidance Document, located in Volume 2 of the DCO Application.

The local authorities' boundaries and titles are correct at the time of submission. North Yorkshire County Council and its 7 districts are expected to form a new single council (North Yorkshire Council) on 1 April 2023.

The statutory site boundary information was obtained from the Multi-Agency Geographic Information for the Countryside (MAGIC) website. Non-statutory site data has been supplied by West Yorkshire Ecology Services and North and East Yorkshire Ecological Data Centre.

There are no sites of geological importance within the Order Limits on this plan.

Coordinate System: British National Grid  
 Sheet X Centroid Coordinate: 446992 Sheet Y Centroid Coordinate: 442956

BACKGROUND MAPPING INFORMATION HAS BEEN REPRODUCED FROM THE ORDNANCE SURVEY BY PERMISSION OF ORDNANCE SURVEY OF THE CONTROLLER OF HER MAJESTY'S STATIONERY OFFICE. CROWN COPYRIGHT ORDNANCE SURVEY ©. BLUESKY INTERNATIONAL LTD ©. NATIONAL GRID ELECTRICITY - 100024241.

Issue	Date	Remarks	Drawn	Checked	Approved
A	01/11/2022	FOR DCO SUBMISSION	MTH	SF	EMD

**Title**

NATIONAL GRID  
 (YORKSHIRE GREEN ENERGY  
 ENABLEMENT PROJECT) ORDER  
 STATUTORY OR NON-STATUTORY SITES OR  
 FEATURES OF NATURE CONSERVATION PLAN  
 REGULATION 5(2)(1)(i)  
 SECTION C, SHEET 9 OF 9

**nationalgrid**

Application Number	EN020024
National Grid Drawing Reference	DCO_C/NR/PS/09
Scale	1:2,500
Sheet Size	A0
Sheet	SHEET 9 OF 9
Issue	A



**National Grid plc  
National Grid House,  
Warwick Technology Park,  
Gallows Hill, Warwick.  
CV34 6DA United Kingdom**

**Registered in England and  
Wales  
No. 4031152**

